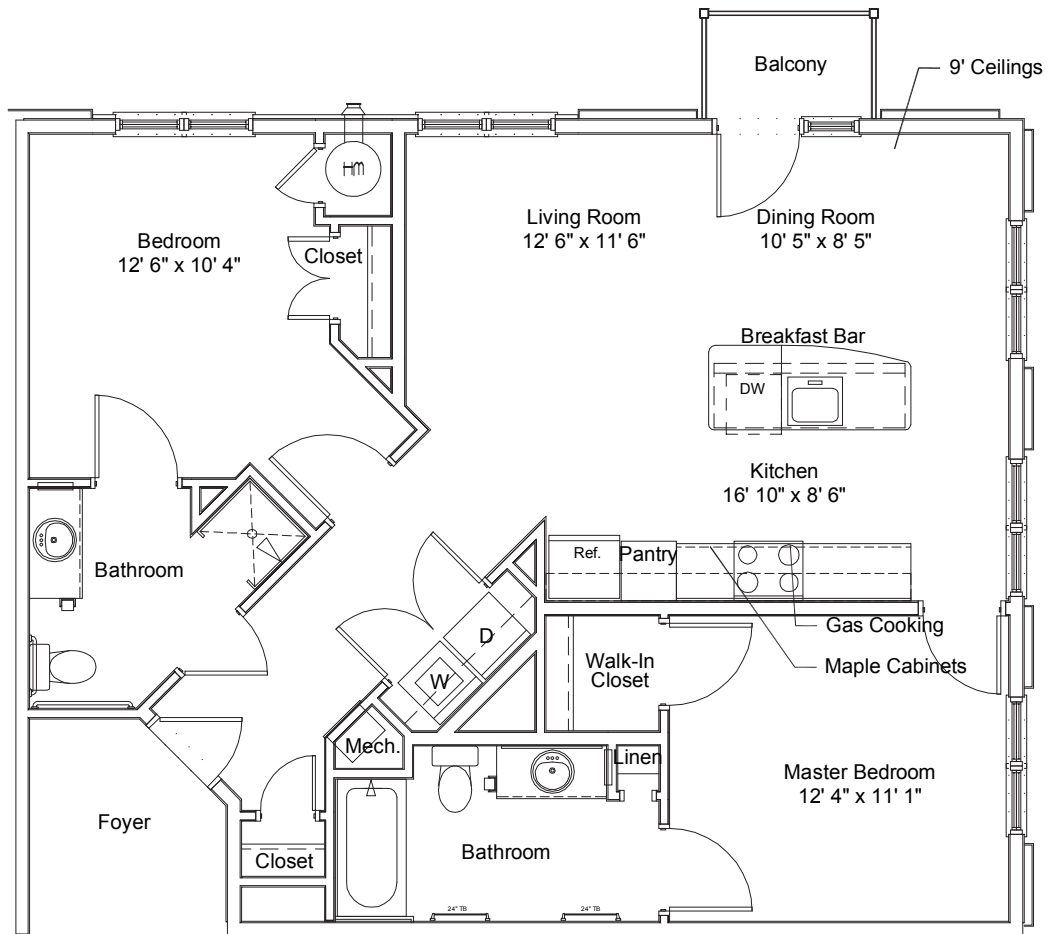


THELOFTS

at Valley Forge



Spruce | Two Bedroom | Two Bathroom | 1031 sq. ft.*

*Handicap units are available.

ALL DIMENSIONS AND SQUARE FOOTAGE ARE APPROXIMATE. PRICING SUBJECT TO CHANGE. THIS PROPERTY IS IN COMPLIANCE WITH THE FAIR HOUSING ACT.

The Lofts at Valley Forge | 1876 Minuteman Lane | West Norriton | PA 19403
www.TheLoftsAtValleyForge.com | TEL 610.630.1014 | FAX 610.630.1295